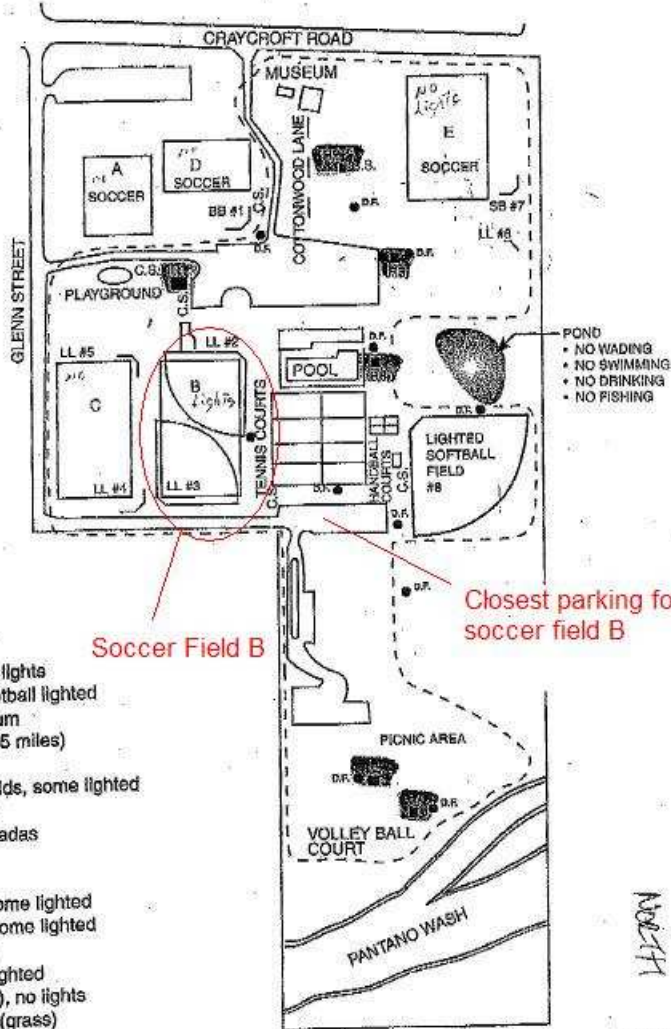


FT. LOWELL PARK

2900 N. Craycroft



- POND
- NO WADING
 - NO SWIMMING
 - NO DRINKING
 - NO FISHING

LEGEND

- East District
- Football field no lights
- Handball/racquetball lighted
- Historical museum
- Jogging path (1.5 miles)
- Lake (pond)
- Little League fields, some lighted
- Parking spaces
- Picnic sites/ramadas
- Public art
- Restrooms
- Soccer fields, some lighted
- Softball fields, some lighted
- Swimming pool
- Tennis courts, lighted
- Volleyball (sand), no lights
- Volleyball court (grass)

Soccer Field B

Closest parking for soccer field B



Not to scale

City of Tucson Parks and Recreation